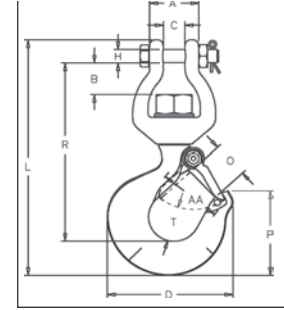




S-3316
REPLACEMENT HOOK

- Easily attaches to any chain and electric hoist with welded link load chain, roller chain or wire rope with suitable end fitting.
- Swivel jaw is forged.
- Suitable for infrequent, non-continuous rotation under load.
- Use in corrosive environment requires shank and nut inspection in accordance with ASME B30.10-1.10.4(b)(5)(c)2009.



SEE APPLICATION AND WARNING INFORMATION
On Pages 142 - 143
Para Español: www.thecrosbygroup.com

S-3316 Replacement Hook

Working Load Limit (Tons)*	Frame Code	S-3316 Stock No.	Weight Each (lbs.)	Dimensions (in.)										Replacement Latch Kit Stock No.
				A	B	C	D	H	L	O	P	R	T	
1/2	F	1023029	1.25	1.31	.76	.56	3.19	.38	6.12	.97	2.25	4.59	.81	1096374
1	H	1023047	2.61	1.56	1.00	.69	4.09	.44	7.69	1.12	2.84	5.81	1.19	1096468

*Ultimate Load is 5 times the Working Load Limit.